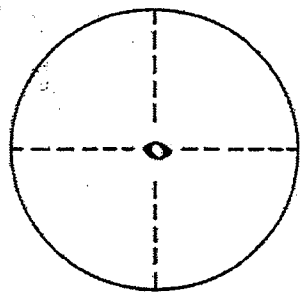


各種音符的比例



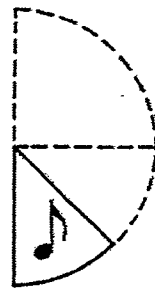
全音符



二分音符



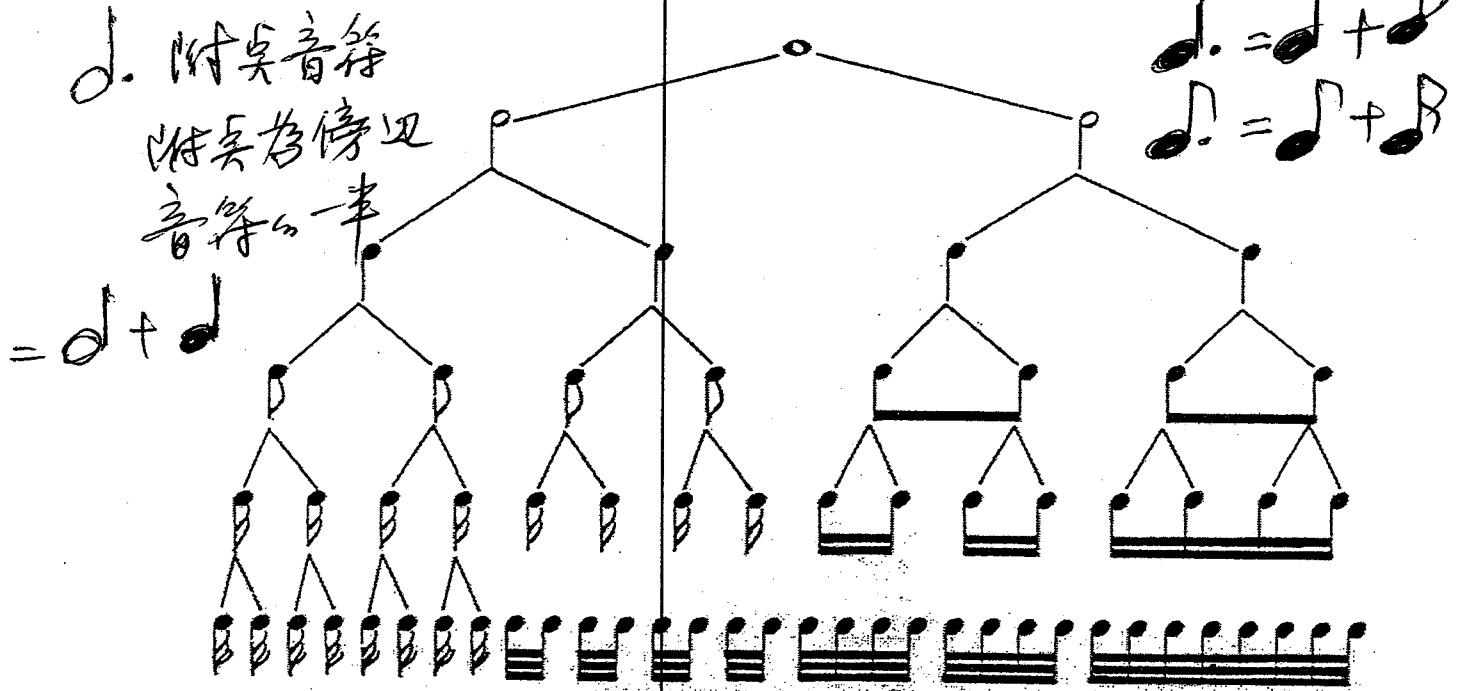
四分音符



八分音符



十六分音符



音 符	時 值	休 止 符
全 音 符	4 拍	全 休 止 符
二 分 音 符	2 拍	二 分 休 止 符
四 分 音 符	1 拍	四 分 休 止 符
八 分 音 符	$\frac{1}{2}$ 拍	八 分 休 止 符
十 六 分 音 符	$\frac{1}{4}$ 拍	十 六 分 休 止 符

C 大调      G 大调      D 大调      A 大调      E 大调

Handwritten musical notation for major scales C, G, D, A, and E. Each scale is shown in two staves (treble and bass clef) with notes connected by dashed lines. The scales are: C major (C-D-E-F-G-A-B), G major (G-A-B-C-D-E-F#), D major (D-E-F#-G-A-B-C), A major (A-B-C#-D-E-F#-G), and E major (E-F#-G-A-B-C#).

F 大调      B 大调      E 大调      B A 大调      D 大调

Handwritten musical notation for major scales F, B, E, B A, and D. Each scale is shown in two staves (treble and bass clef) with notes connected by dashed lines. The scales are: F major (F-G-A-C-Bb), B major (B-C#-D-E-F#-G#), E major (E-F#-G-A-B-C#), B A major (B-C#-D-E-F#-G#), and D major (D-E-F#-G-A-B-C).

C大調

D<sup>b</sup>大調

Handwritten musical notation for C major and D major scales in bass clef. The C major scale is written on the first staff, and the D major scale is written on the second staff. Both scales are shown as a sequence of notes on a five-line staff, with a double bar line separating the two scales.

E<sup>b</sup>大調

F大調

Handwritten musical notation for E-flat major and F major scales in bass clef. The E-flat major scale is written on the third staff, and the F major scale is written on the fourth staff. Both scales are shown as a sequence of notes on a five-line staff, with a double bar line separating the two scales.

G<sup>b</sup>G

A<sup>b</sup>A

Handwritten musical notation for G-flat major and A-flat major scales in bass clef. The G-flat major scale is written on the fifth staff, and the A-flat major scale is written on the sixth staff. Both scales are shown as a sequence of notes on a five-line staff, with a double bar line separating the two scales.

B<sup>b</sup>B

● 為中一個音 D<sub>0</sub> =  $\frac{3}{2}^2$

Handwritten musical notation for the B-flat major scale in bass clef, written on the seventh staff. The scale is shown as a sequence of notes on a five-line staff, with a double bar line at the end.

連用例 2# = 5b. 調号不同 唱法相同 (主音同位置)

Handwritten musical notation for the first system, showing two staves with notes and accidentals. Includes annotations:  $D = b^b$ ,  $A = bA$ ,  $2\# = 5b$ , and  $A = bA$ .

Handwritten musical notation for the second system, showing two staves with notes and accidentals. Includes annotations:  $E = bE$ ,  $F = bF$ ,  $4\# = 3b$ , and  $F = bE$ .

Handwritten musical notation for the third system, showing two staves with notes and accidentals. Includes annotations:  $B$ ,  $2b = 5\#$ , and  $bB = B$ .

Handwritten musical notation for the fourth system, showing two staves with notes and syllables. Includes annotations:  $\uparrow 3d$ ,  $高音部 Mi = 低音部 唱 Sol$ , and  $La$ .

# 調子的看法

① 上一個音就是D<sub>0</sub>。(主音)

又個以上以最右邊(最後一個)井記子往上一個音就是D<sub>0</sub>。(主音) 無論幾個井, 以最後一個音為準

② 記子往下數中四音就是D<sub>0</sub>。(主音) 以此類推)

又個以中=5 b 往下數中四個音為D<sub>0</sub>。(主音)

\* 往上數是中五個音為D<sub>0</sub>。

無論幾個 b, 以最後(最右)一個算起, 以此類推

高音譜很熟, 低音譜不熟的人, 連唱法,

高音的D<sub>0</sub>, 低音唱Mi } 多唱 = 個音 (差 = 度)  
高音的Mi, 低音唱Sol

D<sub>0</sub> = Mi Re = Fa. Mi = Sol Fa = La 類推.

通用調. (限於唱的看譜方法)

2# D 大調 = 5 b <sup>b</sup>D 大調 (位置相同)

3 b <sup>b</sup>E 大調 = 4# E 大調

1 b 下大調 = 6# #F 大調

2 b <sup>b</sup>B 大調 = 5# B 大調

但鋼琴(琴鍵) D 大調和 <sup>b</sup>D 大調並不同位置.  
(其餘各調亦然)